

QUICKSTART

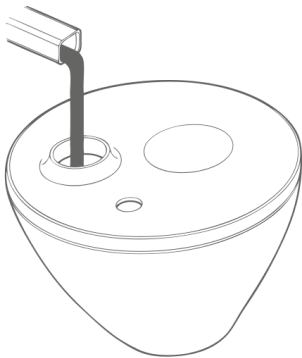
Please contact us first with any questions or problems you have about the operation of your Crane humidifier.



1-888-599-0992



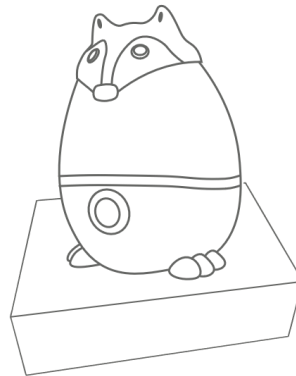
questions@crane-usa.com



FILL

Remove tank and unscrew cap, fill with clean water, and replace cap and tank.

Also works with essential oils.



PLACE

Place on a solid elevated surface, at least 2 ft. off the ground

**DO NOT PLACE ON
A WOOD SURFACE**



SET

Set in a well ventilated room and adjust the intensity so the mist rises up



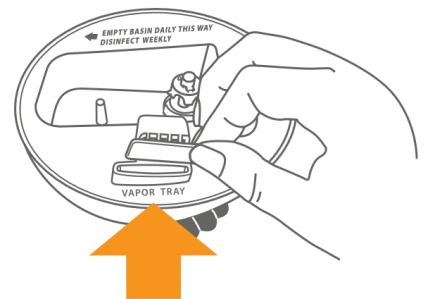
EMPTY + CLEAN

Empty tank, use Crane Cleaner or vinegar and water



NIGHTLIGHT

Press and hold on/off button to turn color changing light on. Press and hold again to turn off.



VAPOR PAD

Only use vapor pad in the aroma tray.

Do not put vapor pad in the tank.



Mini Adorable Humidifier 0.5 GALLON Ultrasonic Cool Mist Humidifier

FOR MODELS:
EE-8256 & EE-8257



If you have any questions about the operation of your humidifier, please contact Crane Customer Care.

Toll Free: 1-888-599-0992

Email: customer-service@crane-usa.com



**PLEASE READ AND SAVE ALL INSTRUCTIONS TO ENSURE
THE SAFE AND EFFECTIVE USE OF THIS HUMIDIFIER.**

SAVE YOUR DATED PROOF OF PURCHASE!

[You will need this in case of warranty]

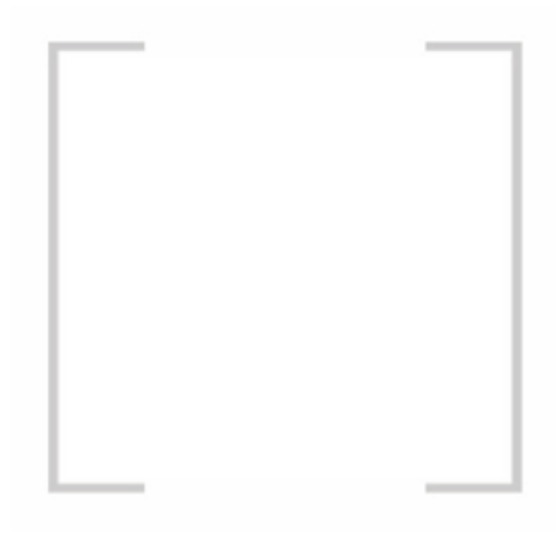
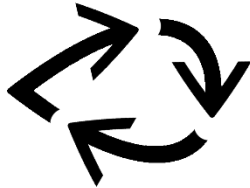


TABLE OF CONTENTS

Table of Contents& Sustainability	P. 1
Safety Instructions	P. 2-3
List of Main Parts	P. 4
Technical Specifications, Assembly & Use	P. 5-6
Vapor Pads, Maintenance & Storing Your Humidifier	P. 7
Customer Care & Trouble Shooting	P. 8
Warranty	P. 9

CRANE & SUSTAINABILITY



Crane USA is dedicated to your environment both inside and outside your home. We know if cleaned and maintained properly, our products last for years helping to reduce unnecessary use of resources and emissions making new products.

The Crane manual you are holding is from recycled materials with no added finishes or harmful dyes. If the humidifier should no longer operate, please be sure to dispose of the unit in an environmentally friendly way by taking it to a public collection point.

PLEASE DO NOT PLACE BROKEN HUMIDIFIERS WITH YOUR REGULAR HOUSEHOLD WASTE.

IMPORTANT SAFETY INSTRUCTIONS



WARNING! READ AND SAVE THESE INSTRUCTIONS. Failure to follow all of the instructions listed below may result in electric shock, fire and/or serious personal injury.

1. **It is advisable to carry filled Water Tank with two hands.**
2. **DO NOT operate outdoors. This humidifier is intended for indoor use only.**
3. Always have water in the Water Tank when operating the unit.
4. Use only clean, cool tap water to fill the Water Tank (filtered or distilled water is recommended to avoid white dust if tap water is too hard). **DO NOT use hot water.**
5. Be sure that the Water Tank Cap is firmly tightened on Water Tank. Always have the Mist Lid in place while the unit is operating. Place the humidifier so the mist aims away from children, walls, furniture and electrical appliances.
6. Use only a 110-120VAC outlet.
* **ALWAYS plug and unplug unit with dry hands to avoid electric shock.**
7. Never operate the unit with a damaged cord or plug.
8. Always place the unit on a smooth, flat, lint-free, non-metallic, waterproof and level surface and position unit away from direct sunlight. Keep the cord away from heated surfaces and areas where it could be walked on or tripped over. Unplug the unit when not in use and whenever you clean or move the unit.
9. Do not add medication, salt or additives into the Water Tank or base. **ONLY** essential oils can be added directly into the water tank. **ONLY** use vapor pads in the vapor tray of this humidifier, not in the water tank.
10. Do not cover any openings on the unit or insert objects into any openings.
11. The unit should not be left unattended in a closed room as the air could become saturated and leave condensation on walls or furniture. Leave room door partly open when humidifier is being operated.
12. When cleaning the inside of the humidifier, keep water away from the Fan Vent. **Turn off and unplug the humidifier to wipe the exterior** (except the electrical controls) with a damp cloth. Humidifier requires regular cleaning. Please refer to the CLEANING INSTRUCTIONS in this manual.
13. Do not tilt or tip the humidifier or attempt to empty or fill it while it is in operation.
14. Do not use a detergent to clean any parts of the unit that contain water. Detergent film dissolved in the water supply can interfere with the output of the unit. Instead, always use white vinegar mixed with water to clean the humidifier.

SAVE THESE INSTRUCTIONS!

GENERAL SAFETY INSTRUCTIONS



WARNING! Read and understand all instructions. Failure to follow all instructions listed below may result in electric shock, fire or serious personal injury. The warnings, cautions, and instructions discussed in this instruction manual cannot cover all possible conditions and situations that may occur. It must be understood by the user that common sense and caution are a factor which cannot be built into this product, but this must be supplied by the user.

THIS HUMIDIFIER IS NOT A TOY!

Do not let your child play with this humidifier. Serious injury and electrocution might be possible. This humidifier has to be operated by an adult only. Children should be supervised to ensure that they do not play with the humidifier.

SAVE ALL INSTRUCTIONS!

CAUTION: A short Power Supply Cord is provided to reduce the risk of personal injury resulting from becoming entangled in or tripping over a longer cord. Extension cords are available from local hardware stores and may be used if care is exercised in their use. If an extension cord is required, special care and caution is necessary. Also the extension cord must be (1) marked with an electrical rating of 125 V and at least 13 A., 1625 W., and (2) the cord must be arranged so that it will not drape over the countertop or tabletop where it can be pulled on by children or accidentally tripped over.

ELECTRIC POWER

If the electric circuit is overloaded by other appliances, your humidifier and/or appliances may not operate properly. The humidifier should be operated on a separate electrical circuit from other operating appliances.

AC ADAPTOR

The AC/DC Adaptor included with the Crane Drop Cool Mist Humidifier with Sound Machine is 100-240V 50/60 Hz and can be used worldwide. However, in some countries you may need to use an outlet adaptor.



SAFETY WARNING



Although your humidifier is easy to operate, for your safety, the below warnings must be followed:

1. Do not place the humidifier near a heat source.
2. Never leave the humidifier unattended while connected to the electrical outlet.
3. To avoid any accidents, never cover the Mist Lid when the humidifier is in operation.
4. Use the humidifier on a smooth, flat, lint-free, non-metallic, waterproof, and level surface away from water.
5. Do not unplug from the wall socket by pulling on the supply cord.
6. The humidifier must be unplugged:
 - A. Before either filling or emptying the Water Basin and/or Water Tank.
 - B. Before any cleaning or maintenance is performed.
 - C. After each use.
 - D. If it appears to be faulty.

THIS PRODUCT IS INTENDED FOR HOUSEHOLD USE ONLY.

LIST OF MAIN PARTS

Fig. 1 (Humidifier Base)

1. Nebulizer
2. Fan Outlet
3. Vapor Tray
4. Water Level Sensor
5. Power Button& Indicator Light
6. Cord/AC Adaptor
7. Includes 1 Vapor Pad (HS-1950/L)

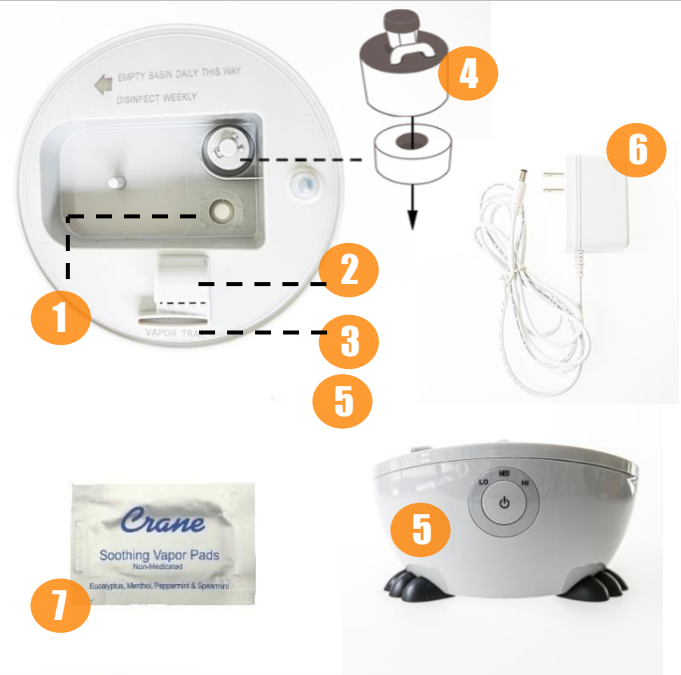


Fig. 2 (Water Tank)

8. Water Tank Handle
9. Mist Outlet Channel
10. Water Tank Cap



Fig. 3 (Mist Lid)

11. Mist Output Slot



TECHNICAL SPECIFICATIONS

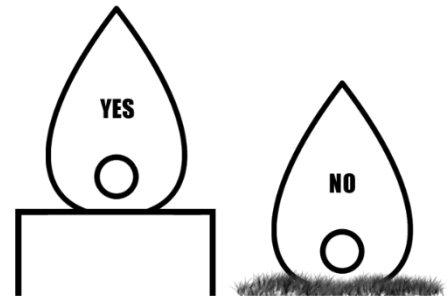
Rating Voltage	24 VDC, 1.0 Amp (AC Adaptor)
Wattage	24W
Frequency	60Hz
Water Tank Capacity	Approx. 0.5 Gallon / 1.89 Liter
Run Time Per Tank	Up to 15 hours
Humidifying Capacity	Up to 250 sq. ft. / 23m2
Noise Level	< 37 decibels from 3 ft away

BEFORE EACH USE:

CHECK HUMIDIFIER PLACEMENT:

Place the Humidifier on an elevated, non-metallic, lint-free, waterproof, level surface at least 2 feet above the floor.

- **DO NOT PLACE ON CARPET OR TOWEL.** The fan vent is located on the bottom of the humidifier base. The fan vent **MUST NOT** be obstructed.
- **DO NOT PLACE ON WOOD SURFACE** or near furniture that can be damaged by too much moisture.



CHECK WATER LEVEL SENSOR:

Make sure the Water Level Sensor is secured properly and not obstructed.
(Page 4 – Fig. 1)



CAUTION

- **DO NOT** attempt to operate the humidifier without water in the Water Tank.
- **DO NOT** plug or unplug the Power Cord with wet hands as electric shock could occur.

ASSEMBLY& USE

ALWAYS use fresh cool water when operating the humidifier.

1. Turn Water Tank upside down, unscrew Water Tank Cap and fill with cool water.
NOTE: filtered or distilled water is recommended to avoid white dust if tap water is too hard.
2. Add essential oils to water tank as desired.

ALWAYS HOLD WATER TANK WITH TWO HANDS WHEN FULL.

DO NOT fill water all the way to the rim.

DO NOT use hot water.

DO NOT add any medication, salt or vapor pad to the water tank. **ONLY essential oils can be added directly into the water tank.**

DO NOT pour water into Mist Lid.



3. Screw Water Tank Cap back onto Water Tank and turn the tank over to place on Humidifier Base, making sure it fits together securely.

Note: Do not attempt to move the humidifier while full Water Tank is placed on the Humidifier Base. Doing so may cause leakage of water and/or Humidifier Base to overflow.

4. Attach the Ac Adaptor to the base of the unit and plug the other end into a wall outlet. Turn the humidifier on by pressing the power button.
5. The Power Indicator Light will illuminate in GREEN indicating the unit is on and that there is enough water in the Humidifier Base and mist will begin emitting through the Mist Lid.

Note: After 20 seconds, the indicator light will turn off, but product will continue to run.

1st Short Press Power Button:	Humidifier Mist on Low
2nd Short Press Power Button:	Humidifier Mist on Medium
3rd Short Press Power Button:	Humidifier Mist on High
4th Short Press Power Button:	Humidifier Mist turns off

6. Long press the power button to turn on the color changing light feature.

1st Long Press Power Button:	Light will stay on Red
2nd Long Press Power Button:	Light will cycle through colors
3rd Long Press Power Button:	Light will turn off

SET THE CORRECT HUMIDITY OUTPUT: Adjust the mist output so the mist rises up to be absorbed by the room air. If mist drops quickly, use a lower output setting so the mist is rising up.

7. When the humidifier runs out of water, the Power Indicator Light will turn RED and the mist output will stop. This is a safety feature to prevent the humidifier from possibly overheating and damaging the Nebulizer. Turn the humidifier off and unplug the unit before removing and refilling the water tank. When emptying the base, be sure to pour away from the fan outlet.

VAPOR TRAY: Remove the water tank. Place the Crane Vapor Pads (HS-1950/L) into the vapor tray or add essential oils to the vapor tray as desired. Replace the water tank before running the humidifier.

VAPOR PAD PRECAUTION

- **Not recommended for infants under 10 lbs. (4.5 kg).**
- **For children between 10-22 lbs. (4.5 kg) do not use more than 2 pads in a 24-hour period.**



A NOTE ABOUT HUMIDITY

- To reduce excessive humidity or condensation, especially in small rooms, leave the room door open and adjust mist intensity to the low output setting.
- Too much humidity in the room may allow moisture to accumulate on surfaces where bacteria and fungi can grow. Moisture that gathers may also damage furniture and walls, especially wallpaper.

MAINTENANCE

Cleaning and disinfecting the humidifier on a regular basis is important for maintaining the performance of your humidifier.

IMPORTANT: Water left in the tank or base when not in use may result in buildup of mineral deposits and bacteria which may inhibit the output efficiency as well as void the warranty. If water remains in the Water Tank for more than a day or two, bacterial growth is possible.

DAILY MAINTENANCE

1. Turn off, unplug from outlet and empty water from tank & base daily.
2. Allow tank & base to air dry.
3. Leave cap off the tank until ready for next use.

WEEKLY MAINTENANCE

1. Turn off, unplug from outlet and empty water from tank & base.
2. Fill the water tank halfway warm water and add 2 Tablespoons of white vinegar. Shake vigorously and let sit for 30 minutes. Empty tank and rinse with plain water.
3. Fill base with warm water, add 1 tablespoon of white vinegar and let sit for 30 min. Empty base & rinse with plain water. Make sure to pour water away from the fan outlet when emptying.
TIP: Clean the nebulizer with a damp cloth or cotton swab after soaking.
4. Allow tank & base to air dry and leave cap off the tank until the next use.
NEVER IMMERSE HUMIDIFIER BASE IN WATER.

END-OF-SEASON MAINTENANCE & STORING YOUR HUMIDIFIER

1. Turn off, unplug from outlet, and empty water from tank & base.
2. Follow instructions for weekly maintenance above.
3. Let all parts dry completely.
4. Store humidifier in a cool, dry place.

CRANE CUSTOMER CARE

CALL US: 1-888-599-0992 (Mon-Fri 9:00am – 4:00pm CST)
EMAIL US: customer-service@crane-usa.com
LIVE CHAT: available at www.crane-usa.com

TROUBLESHOOTING

DO NOT attempt to repair the motor yourself.

If the humidifier continues to not operate, please contact Crane Customer Care.

Problem	Solution
Indicator Light is Staying Red:	<ul style="list-style-type: none">▪ Ensure the cap is secured properly to the tank allowing water to pass through to the base.▪ Clean the Water Level Sensor: Pull off the plastic cap from the peg. Remove the water level sensor float and clean with warm sudsy water. Replace parts by first putting the float onto the peg, then replacing the plastic cap on the peg. (Page 4 – Fig. 1)
Humidifier Does Not Have Any Power:	<ul style="list-style-type: none">▪ Ensure unit is properly plugged into a power outlet / try another power outlet.▪ Check the Control Knob is turned to the ON position.▪ If Power On indicator light does not come on, contact Customer Care.
There is a Strange Odor:	<ul style="list-style-type: none">▪ Clean the Water Tank with a water & white vinegar solution and rinse with clean water. (Page 7)▪ Leave the empty Water Tank open in a cool place for 12 hours without the Water Tank Cap attached.
Indicator Light is Green, But There's No Mist:	<ul style="list-style-type: none">▪ Complete the weekly maintenance. (Page 7)▪ Humidifier should be placed on a hard, flat surface & fan vent should not be blocked.▪ The base might be overfilled: Remove the tank, empty the base & replace the filled tank on the empty base.▪ Try turning the mist setting HIGH and let it run for 10 minutes.
White Dust Appears & Settles Outside the Humidifier:	<ul style="list-style-type: none">▪ Area tap water may have too many minerals. Change to filtered or distilled water or use with a Crane Demineralization Filter cartridge (HS-1932).
Humidifier is Leaking:	<ul style="list-style-type: none">▪ From MIST LID: Turn control knob down▪ From TANK: Check for possible cracks in the tank or around the seam of the tank▪ From BASE: Call Customer Care

NOTE: Spare Parts can also be purchased online at www.crane-usa.com

CRANE WARRANTY

For more information regarding the warranty policy,
please visit our website: www.crane-usa.com/customer-service

LIMITED WARRANTY

Thank you for purchasing a Crane product which has been tested to meet our stringent quality standards. This product is warranted to be free from manufacturing defects under normal use and conditions for 1 year.

**PLEASE CONTACT US BEFORE RETURNING THIS PRODUCT TO THE STORE.
CALL CRANE CUSTOMER CARE FOR PROBLEMS AND QUESTIONS. WE CAN HELP.**

WARRANTY REQUIRES A DATED PROOF OF PURCHASE.

This warranty is void if the defect is due to accidental damage, misuse, abuse, neglect, improper repair or alteration by unauthorized persons, or a failure to follow operating instructions provided with the product **including the use of any additive or vapor Pads, EXCEPT essential oils, directly into the tank.** This warranty does not apply to normal wear and tear or commercial use.

In no event shall liability exceed the purchase price paid by the purchaser of the product. Under no circumstances shall there be liability for any loss – direct, indirect or incidental – or consequential damage arising out of, or in connection with the use of this product.

This warranty is valid only in the 48 contiguous states plus the District of Columbia and excludes Puerto Rico and the Virgin Islands. This warranty is effective only if the product is purchased and operated in the United States of America.

Any instructions or warranty included in this manual may be subject to change without notice. For the most up-to-date instructions and warranty information, please contact us or visit our website.

**TO RECEIVE WARRANTY INSTRUCTIONS AND RETURN AUTHORIZATION,
PLEASE CALL OR EMAIL CRANE CUSTOMER CARE.**

CRANE USA, INC.

1015 Hawthorn Dr., Itasca, IL 60143

Toll Free: 1-888-599-0992 (Monday - Friday 9:00am - 4:00pm CST)

Email: customer-service@crane-usa.com

Website: www.crane-usa.com

