

Crane

Air Purifier Instruction Manual

FOR MODEL: EE-7002AIR



If you have any questions about the operation of your air purifier, please contact Crane Customer Care.

Toll Free: 888-599-0992

Email: customer-service@crane-usa.com



**PLEASE READ AND SAVE ALL INSTRUCTIONS TO ENSURE
THE SAFE AND EFFECTIVE USE OF THIS Air Purifier.**

SAVE YOUR DATED PROOF OF PURCHASE!

[You will need this in case of warranty]

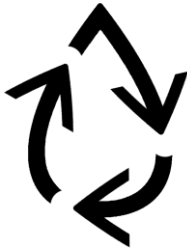


staple
tape
or paperclip
your
receipt
HERE

TABLE OF CONTENTS

Table of Contents, Sustainability	P. 3
Safety Instructions	P. 4-5
List of Main Parts, Technical Specifications	P. 6
Air Purifier Assembly & Use & Maintenance	P. 7
Customer Care & Troubleshooting	P. 8
Warranty	P. 9

CRANE & SUSTAINABILITY



Crane USA is dedicated to your environment both inside and outside your home. We know if cleaned and maintained properly, our products last for years helping to reduce unnecessary use of resources and emissions making new products.

The Crane manual you are holding is from recycled materials with no added finishes or harmful dyes. If the humidifier should no longer operate, please be sure to dispose of the unit in an environmentally friendly way by taking it to a public collection point.

PLEASE DO NOT PLACE BROKEN AIR PURIFIERS WITH YOUR REGULAR HOUSEHOLD WASTE.

IMPORTANT SAFETY INSTRUCTIONS



WARNING! READ AND SAVE THESE INSTRUCTIONS. Failure to follow all the instructions listed below may result in electric shock, fire and/or serious personal injury.

1. To avoid fire and shock hazard, plug the appliance directly into a 120V AC electrical outlet.
2. Never operate the unit with a damaged cord or plug.
3. Keep cord out of heavy traffic areas. To avoid fire hazard, NEVER put the cord under rugs, or near heat registers, radiators, stoves, or heaters.
4. Always place the air purifier where it is not easily knocked over by persons in household.
5. Never touch the air purifier with wet hands. **ALWAYS plug and unplug unit with dry hands.**
6. Do not operate the product in any greasy environment such as a kitchen. This product is not intended to filter oil or grease from air.
7. Do not use air purifier in bathrooms or other humid environments, near fireplaces or in areas where flammable or combustible vapors or products may exist.
8. Always unplug the power cord from electrical outlet when the air purifier is not in use, before cleaning, inserting or removing parts or before moving to another location.
9. NEVER run air purifier until it is fully assembled.
10. NEVER drop or insert any object into any openings.
11. Use appliance only for the intended household use as described in this manual. Do not use outdoors.
12. Never use the power cord to pick up, carry, pull, or lift the air purifier. Do not pull the cord against or around sharp corners or edges. This could result in injury to the user and/or damage the cord.
13. Never pull on the cord itself to unplug from power outlet.
14. ALWAYS turn unit off before unplugging.
15. Never block the air openings, or place on soft surface, such as a bed or sofa, as this could cause the unit to tip over thus blocking the air intake opening.
16. DO NOT place anything on top of unit.
17. NEVER use detergents, gasoline, glass cleaner, paint thinner or other household solvents to clean any part of the unit.
18. Always place the unit on a smooth, flat, level surface, and away from direct sunlight. Keep the cord away from heated surfaces and areas where it could be walked on or tripped over. Unplug the unit when not in use and whenever you clean or move the unit.
19. Do not operate any fan with a damaged cord or plug. Discard fan or return to an authorized service facility for examination and/or repair.
20. Do not run cord under carpeting. Do not cover cord with throw rugs, runners, or similar coverings. Do not route cord under furniture or appliances. Arrange cord away from traffic area where it will not be tripped over.
21. **WARNING:** To Reduce The Risk Of Fire Or Electric Shock, Do Not Use This Fan With Any Solid-State Speed Control Device.

SAVE THESE INSTRUCTIONS!

THIS PRODUCT IS INTENDED FOR HOUSEHOLD USE ONLY.

- 1. Do not place the air purifier near a heat source.
- 2. Never leave the air purifier unattended while connected to the electrical outlet.
- 3. To avoid any accidents, never cover the air grills when the air purifier is in operation.
- 4. Use the air purifier on a stable, level surface away from water.
- 5. Do not unplug from the wall socket by pulling on the supply cord.
- 6. The air purifier must be unplugged:
 - A. Before any cleaning or maintenance is performed.
 - B. After each use.
 - C. If it appears to be faulty.

Although your air purifier is easy to operate, for your safety, the below warnings must be followed:

SAFETY WARNING



This air purifier has a polarized plug (one blade is wider than the other). As a safety feature to reduce the risk of electrical shock, this plug is intended to fit in a polarized outlet only one way. If the plug does not fit fully in the outlet, reverse the plug. If it still does not fit, contact a qualified electrician. Do not attempt to defeat this safety feature.



POLARIZED PLUG

If the electric circuit is overloaded by other appliances, your air purifier and/or appliances may not operate properly. The air purifier should be operated on a separate electrical circuit from other operating appliances.

ELECTRIC POWER

CAUTION: A short Power Supply Cord is provided to reduce the risk of personal injury resulting from becoming entangled in or tripping over a longer cord.

WARNING: To reduce the risk of fire or electric shock do not use with an extension cord.

SAVE ALL INSTRUCTIONS!

Do not let your child play with this air purifier. Serious injury and electrocution might be possible. This air purifier must be operated by an adult only. Children should be supervised to ensure that they do not play with the air purifier. To reduce the risk of personal injury and electric shock, it should not be played with or placed where small children can reach it.

THIS AIR PURIFIER IS NOT A TOY!

WARNING! Read and understand all instructions. Failure to follow all instructions listed below may result in electric shock, fire or serious personal injury. The warnings, cautions, and instructions discussed in this instruction manual cannot cover all possible conditions and situations that may occur. It must be understood by the user that common sense and caution are a factor which cannot be built into this product, but must be supplied by the user.



GENERAL SAFETY INSTRUCTIONS

LIST OF MAIN PARTS

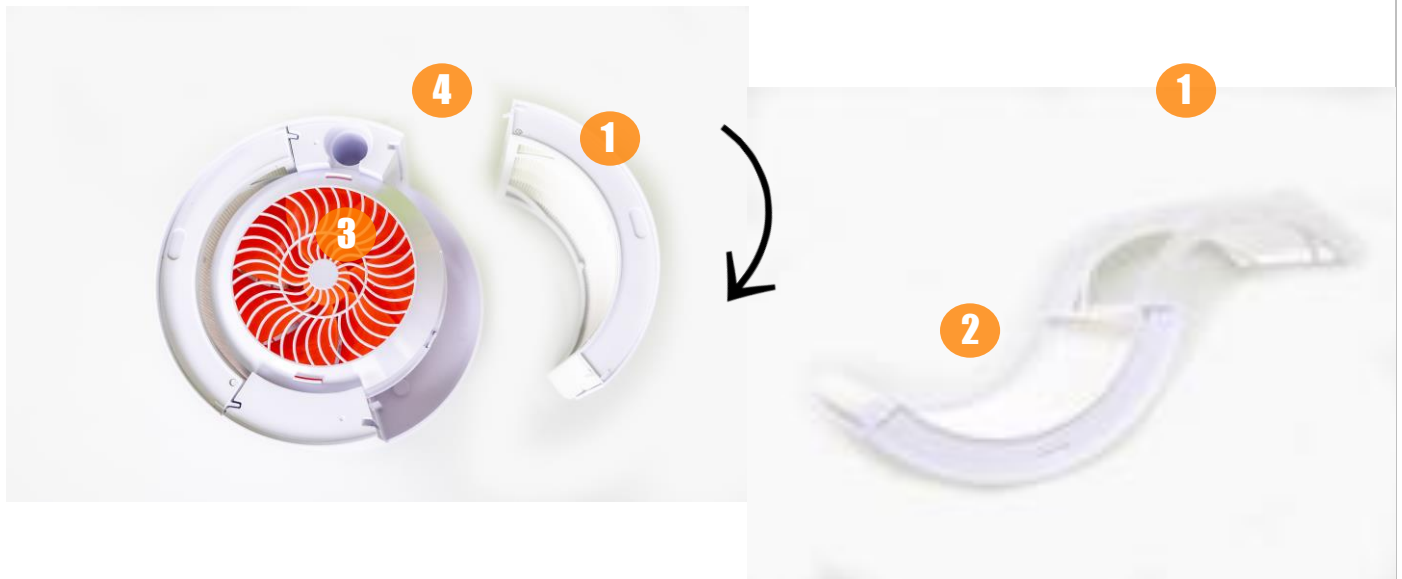


Fig. 1 (Air Purifier Base)

1. Removable Filter Cover
2. Air Purifier Filters (HS- 1941)
3. Fan
4. Top

***USE CRANE HS-1941 FILTERS**

TECHNICAL SPECIFICATIONS

Rating Voltage	120V
Frequency	60Hz
Power	280W

BEFORE EACH USE:

CHECK AIR PURIFIER PLACEMENT:

1. Select a firm, level & flat surface to place the purifier. For proper air flow, locate the unit at least 3 feet from any wall or furniture.
2. Do not place the purifier in close proximity to electronic devices that are sensitive to electrical fields.
3. Do not place the unit on metal shelving. Air purifier may be placed on floor, nightstand, table or desk. Make sure the outlet grill faces away from the nearest wall or furniture.
4. Make sure the intake and outlet grills are not blocked
5. Plug into grounded 120V outlet. (See *Safety Instructions*)



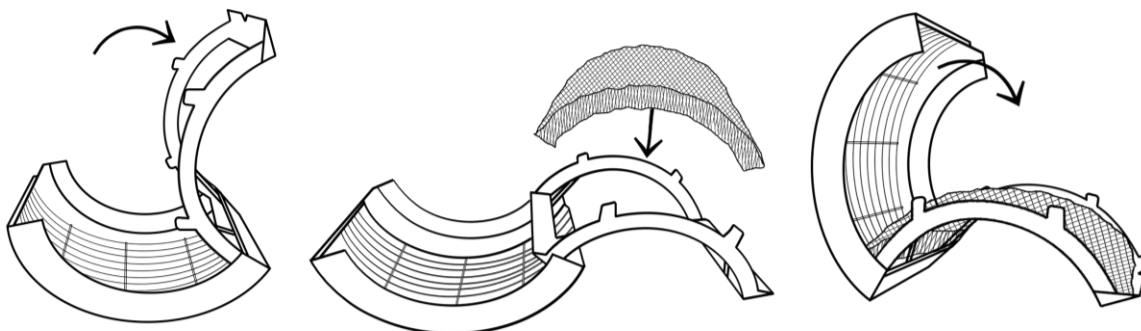
CAUTION

- DO NOT plug or unplug the Power Cord with wet hands; Electric shock could occur.
- Always unplug when not using for an extended period of time

ASSEMBLY & USE

AIR PURIFIER ASSEMBLY

1. Open the filter cover by gently pulling the end with the finger notch until it swings open like a door. There are 2 notches on the insides to help keep the door closed. Try pulling up and out to open.
2. Place air filter along the inside before closing the cover until it snaps closed.
3. Insert filter covers into the sides of the base (see *LIST OF MAIN PARTS: Fig. 1*)
4. Properly place the purifier cover on the base to create a seal (Crane Logo will align with power button)



5. Plug the power cord into a wall socket
6. Press the power button. The power light will illuminate one blue water droplet for low. Press again to change to medium; the light will illuminate 2 blue water droplets. Press a third time to change to high; the light will illuminate 3 blue water droplets. Press a fourth time to power off the purifier.

PURIFIER MAINTENANCE

We recommend unplugging the product before maintenance.

AIR PURIFIER FILTER MAINTENANCE (HS-1941 Filter)

Please check the filter regularly for dust and particles.

1. The filter should be changed every 1-3 months
Please note: Your air quality will affect the life of the filter

TO CHANGE THE FILTER

1. Open each of the filter covers by gently pulling the end with the finger notch until it swings open like a door.
2. Remove and discard the used filter.
3. Place air filter along the inside before closing the cover until it snaps closed.
4. Insert filter covers into the sides of the base (see *LIST OF MAIN PARTS: Fig. 1*)
5. Properly place the purifier cover on the base to create a seal.

PURIFIER MAINTENANCE

1. Unplug the unit before cleaning.
2. The exterior of the unit can be cleaned by wiping with a damp cloth.
DO NOT use gasoline, polish or any chemical solution to clean the purifier.

NOTE: No part of the air purifier should be placed in the dishwasher

END-OF-SEASON MAINTENANCE & STORING YOUR AIR PURIFIER

1. Turn off, unplug from outlet.
2. Follow instructions for Purifier maintenance above.
3. Let all parts dry completely.
4. Store air purifier in a cool, dry place.

CRANE CUSTOMER CARE

CALL US: 888-599-0992 (Mon-Fri 9:00am – 4:00pm CST)

EMAIL US: customer-service@crane-usa.com

LIVE CHAT: available at www.crane-usa.com

TROUBLESHOOTING

DO NOT attempt to disassemble the fan and motor, this will void warranty.
If the air purifier continues to not operate, please contact Crane Customer Care.

Problem	Possible Solution
If air purifier does not have any power:	<ul style="list-style-type: none">▪ Ensure unit is properly plugged into a working power outlet.▪ Check that the Power Button is pressed ON.▪ If Power On indicator light does not come on, contact Crane Customer Care.
If the air flow is reduced	<ul style="list-style-type: none">▪ Make sure that the intake and outlet grills are not blocked and are free of debris.▪ Make sure the washable filter has been cleaned and check your HEPA filter, it may need to be replaced. If the above solutions do not work, please contact Crane Customer Care

NOTE: Spare Parts can also be purchased online at www.crane-usa.com

CRANE WARRANTY

For more information regarding the warranty policy,
please visit our website: www.crane-usa.com/customer-service

LIMITED WARRANTY

Thank you for purchasing a Crane product which has been tested to meet our stringent quality standards. This product is warranted to be free from manufacturing defects under normal use and conditions for 1 year.

**PLEASE CONTACT US BEFORE RETURNING THIS PRODUCT TO THE STORE.
CALL CRANE CUSTOMER CARE FOR PROBLEMS AND QUESTIONS. WE CAN HELP.**

WARRANTY REQUIRES A DATED PROOF OF PURCHASE.

This warranty is void if the defect is due to accidental damage, misuse, abuse, neglect, improper repair or alteration by unauthorized persons, or a failure to follow operating instructions provided with the product. This warranty does not apply to normal wear and tear or commercial use.

In no event shall liability exceed the purchase price paid by the purchaser of the product. Under no circumstances shall there be liability for any loss – direct, indirect or incidental – or consequential damage arising out of, or in connection with the use of this product.

This warranty is valid only in the 48 contiguous states plus the District of Columbia and excludes Puerto Rico and the Virgin Islands. This warranty is effective only if the product is purchased and operated in the United States of America.

Any instructions or warranty included in this manual may be subject to change without notice. For the most up-to-date instructions and warranty information, please contact us or visit our website.

**TO RECEIVE WARRANTY INSTRUCTIONS AND RETURN AUTHORIZATION,
PLEASE CALL OR EMAIL CRANE CUSTOMER CARE.**

CRANE USA, INC.
1015 Hawthorn Dr., Itasca, IL 60143

Toll Free: 1-888-599-0992 (Monday - Friday 9:00am - 4:00pm CST)
Email: customer-service@crane-usa.com
Website: www.crane-usa.com

Crane

DESIGN FOR BETTER LIVING